



Diameter 150mm AGV Steering Wheel Assembly Drive Integrated 400W

Our Product Introduction

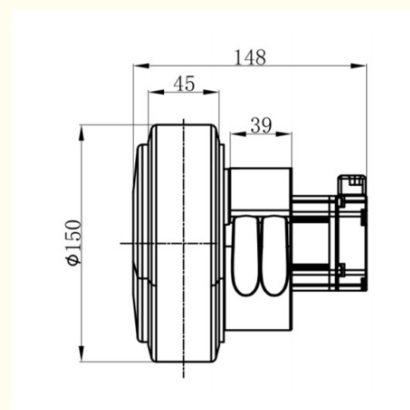
Basic Information

- Place of Origin: GUANGZHOU
- Brand Name: TIANYUE
- Certification: 3c.ce
- Model Number: QDL-150-400
- Minimum Order Quantity: 1
- Packaging Details: wooden box
- Delivery Time: 15 work days
- Payment Terms: T/T
- Supply Ability: 100

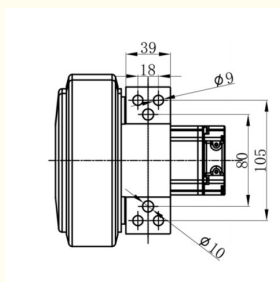
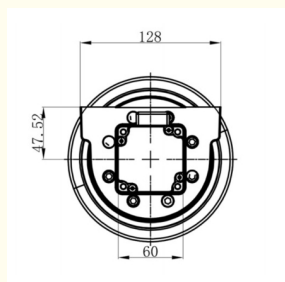


Product Specification

- Wheel Diameter: Diameter 150mm
- Motor Way: Servo Motor
- Voltage: 48V
- Driving Power: 400W
- Series Type: Differential Drive
- Highlight: diameter 150mm AGV Steering Wheel, AGV Steering Wheel 400W, 400W agv wheel drive



More Images

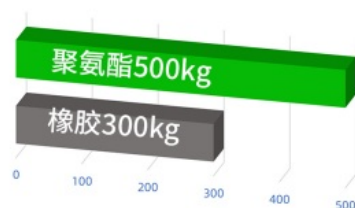


for more products please visit us on roboticsagv.com

Product Description

AGV steering wheel assembly drive, differential drive series integrated 400W drive wheel diameter 150mm

Motor Type	Specification
Power [W]	400
Voltage [V]	24/48
Current [A]	4.5/9.9
Speed [rpm]	3000
Gear Ratio [i]	16
Load Capacity [kg]	400
IP Rating	65



The green bar represents "Polyurethane (聚氨酯)" with a load capacity of 500 kg.
The gray bar represents "Rubber (橡胶)" with a load capacity of 300 kg.



Guangzhou Tianyue Automation Technology Co., Ltd.



13570415240



mkliangjintian@gmail.com



roboticsagv.com

Shop 23,24-101 ,32 Lihong Bei Lu,Jiutan Cun,Huadu District,Guangzhou City,China